



## Great Lakes Water Supply Program CONSTRUCTION NOTIFICATION

Friday, January 7, 2022

Locations noted below as **NEW** indicates new entries in this Construction Notification  
Locations noted below as **UPDATE** indicates updated information has been provided in this Construction Notification

### Community Construction Impact

#### City of Waukesha

**Where:** Sentry Drive at Clean Water Plant

**When:** January 10, 2022

**Duration:** 6-weeks

**General Description:** Return Flow Pipeline – Trenchless Crossings

**Notes:** 2-way vehicular traffic will be maintained with lane restrictions and flagging.  
All local access will be maintained.



**Where:** E. Broadway near Les Paul Parkway

**When:** August 2, 2021

**Duration:** 25-months

**General Description:** Water Supply Booster Pump Station, Ground Storage and Elevated Water Storage Tanks



**NEW Where:** E. Broadway near Les Paul Parkway

**When:** February 28, 2022

**Duration:** 4-weeks

**General Description:** BPS Discharge Pipeline – Trenchless Crossings

**Notes:** 2-way vehicular traffic will be maintained with lane restrictions and flagging.  
All local access will be maintained.



**City of Waukesha, Village of Waukesha**

**UPDATE Where:** Les Paul Parkway at S. East Avenue

**When:** January 3, 2022

**Duration:** 6-weeks

**General Description:** Return Flow Pipeline – Trenchless Crossings

**Notes:** 2-way vehicular traffic will be maintained with lane restrictions.  
All local access will be maintained.



**UPDATE Where:** Les Paul Parkway from S. West Avenue to 1,750' S. Sunset Drive

**When:** January 3, 2022

**Duration:** 12-weeks

**General Description:** Return Flow Pipeline – Open Cut

**Notes:** 2-way vehicular traffic will be maintained with lane restrictions.  
All local access will be maintained.



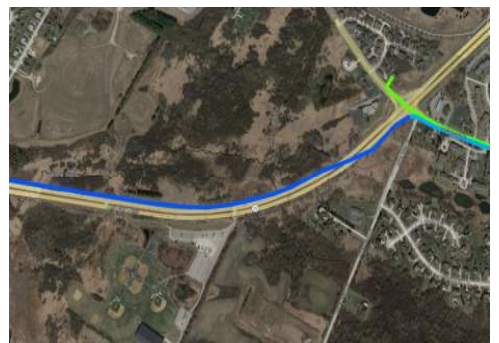
**UPDATE Where:** Les Paul Parkway from 1,750 south of W. Sunset Drive to W. Sunset Drive

**When:** December 8, 2021

**Duration:** 12-weeks

**General Description:** Return Flow Pipeline – Trenchless Crossing & Open Cut

**Notes:** 2-way vehicular traffic will be maintained with lane restrictions on Les Paul Parkway.  
All local access will be maintained.



## City of New Berlin

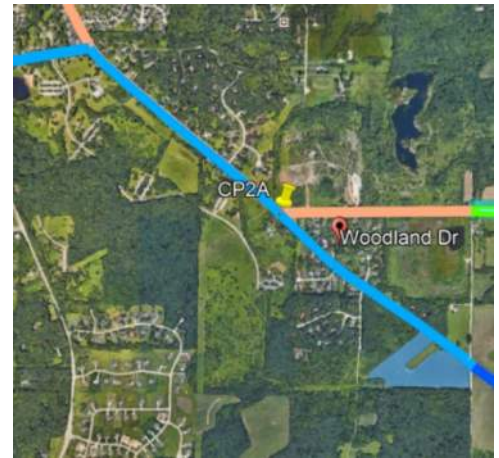
**UPDATE** **Where:** S. Racine Avenue from E. Sunset Drive to S. Swartz Road

**When:** October 25, 2021

**Duration:** 14-weeks

**General Description:** Return Flow Pipeline – Open Cut

**Notes:** 2-way vehicular traffic will be maintained with lane restrictions and flagging for local traffic.  
All local access will be maintained



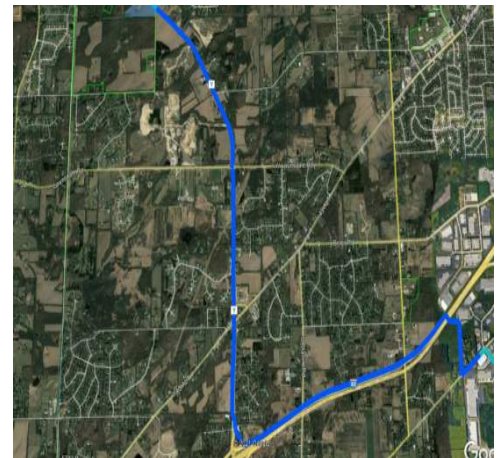
**NEW** **Where:** Racine Avenue from S. Swartz Road to Rock FWY (I-43)

**When:** January 10, 2022

**Duration:** 3-weeks

**General Description:** Return Flow Pipeline – Pipe Testing

**Notes:** 2-way vehicular traffic will be maintained with lane restrictions and flagging for local traffic.  
All local access will be maintained



**Where:** WisDOT I-43 from Racine Court to Martin Road

**When:** TBD

**Duration:** TBD

**General Description:** Return Flow Pipeline – Open Cut & Trenchless Crossings

**Notes:** All local access will be maintained I-43.



**UPDATE** **Where:** WisDOT I-43 from Martin Road to Calhoun Road

**When:** December 8, 2021

**Duration:** 6-weeks

**General Description:** Return Flow Pipeline – Open Cut & Trenchless Crossings

**Notes:** All local access will be maintained on I-43.





**UPDATE Where:** Moorland Road from Westridge Drive to College Avenue

**When:** October 4, 2021

**Duration:** 16-weeks

**General Description:** Return Flow Pipeline – Open Cut Restoration

**Notes:** 2-way traffic will be maintained with lane restrictions and flagging.  
All local access will be maintained.



**City of West Allis**

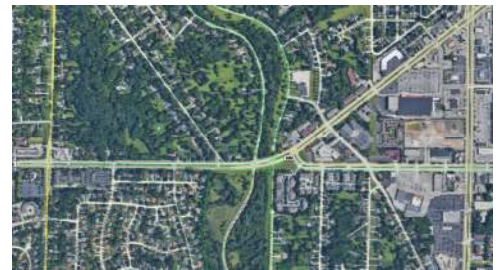
**UPDATE Where:** W. Oklahoma Avenue from 124<sup>th</sup> Street to 108<sup>th</sup> Street

**When:** Spring 2022

**Duration:** TBD

**General Description:** Water Supply Pipeline – Open Cut and Trenchless

**Notes:** All local access will be maintained.



**City of Milwaukee**

**NEW Where:** W. Oklahoma Avenue from S. 74<sup>th</sup> St. to S. 76<sup>th</sup> St.

**When:** January 3, 2022

**Duration:** 17-weeks

**General Description:** Water Supply Pipeline – Open Cut and Jack & Bore

**Notes:** 2-way traffic will be maintained with lane restrictions and flagging.  
All local access will be maintained.



## City of Muskego

<b>UPDATE Where:</b>	Moorland Road from College Avenue to Janesville Road
<b>When:</b>	October 25, 2021
<b>Duration:</b>	15-weeks
<b>General Description:</b>	Return Flow Pipeline – Open Cut Restoration
<b>Notes:</b>	2-way traffic will be maintained with lane restrictions and flagging. All local access will be maintained.



<b>UPDATE Where:</b>	Moorland Road from Janesville Road to Woods Road
<b>When:</b>	December 13, 2021
<b>Duration:</b>	11-weeks
<b>General Description:</b>	Return Flow Pipeline – Open Cut
<b>Notes:</b>	Moorland Road from Sandalwood Drive to Woods Road will be closed to southbound through traffic on February 2 <sup>nd</sup> for 20-days. See <a href="http://greatwateralliance.com">greatwateralliance.com</a> for detour information. 2-way traffic will be maintained with lane restrictions and flagging. All local access will be maintained.



<b>Where:</b>	Durham Drive from Woods Road to N. Cape Road
<b>When:</b>	March 18, 2022
<b>Duration:</b>	3-weeks
<b>General Description:</b>	Return Flow Pipeline – Open Cut
<b>Notes:</b>	Durham Drive from Janesville Road to N. Cape Road will be closed to through traffic at Hi View Drive on March 18 <sup>th</sup> for 10-days. Holz Drive at Durham Drive will be closed to through traffic on March 28 <sup>th</sup> for 11-days. See <a href="http://greatwateralliance.com">greatwateralliance.com</a> for detour information. 2-way traffic will be maintained with lane restrictions and flagging for local traffic. All local access will be maintained.



**City of Franklin, Milwaukee County**

**UPDATE Where:** Ryan Road from 92<sup>nd</sup> Street to St. Martins Road

**When:** January 4, 2022

**Duration:** 8-weeks

**General Description:** Return Flow Pipeline – Trenchless Crossing

**Notes:** 2-way traffic will be maintained with lane restrictions and flagging.  
All local access will be maintained.



**UPDATE Where:** W. Ryan Road from W. Loomis Rd. to S. 60<sup>th</sup> Street

**When:** February 28, 2022

**Duration:** 11-weeks

**General Description:** Supply Flow Pipeline – Open Cut

**Notes:** 2-way traffic will be maintained with lane restrictions and flagging.  
S. 92<sup>nd</sup> Street at W. Ryan Road will be closed to through traffic on March 31<sup>st</sup> for 2-days.  
S. 68<sup>th</sup> Street at W. Ryan Road will be closed to through traffic on April 28<sup>th</sup> for 2-days.  
All local access will be maintained.



**Where:** Ryan Road (STH 100) at Root River (west of 60<sup>th</sup> Street)

**When:** October 18, 2021

**Duration:** 14-weeks

**General Description:** Return Flow Pipeline – Trenchless Crossing

**Notes:** 2-way traffic will be maintained with lane restrictions and flagging.  
HWY 100 eastbound lane west of 60<sup>th</sup> street lane closure.  
All local access will be maintained.





**UPDATE Where:** 60<sup>th</sup> Street from Ryan Road (STH 100) to Oakwood Road

**When:** October 4, 2021

**Duration:** 16-week

**General Description:** Return Flow Pipeline – Open Cut

**Notes:** South 60<sup>th</sup> Street from Ryan Road to Oakwood will be closed to northbound traffic on November 23<sup>rd</sup> for 60-days  
Franklin Drive at South 60<sup>th</sup> Street will be closed to on January 7<sup>th</sup> for 15-days.  
Oakwood Drive at South 60<sup>th</sup> Street will be closed to northbound traffic on January 27<sup>th</sup> for 2-day.  
See [greatwateralliance.com](http://greatwateralliance.com) for detour information.  
All local access will be maintained.



**Where:** Oakwood Road

**When:** May 17, 2021

**Duration:** 28-months

**General Description:** Return Flow Pipeline – Outfall Building



This historic project will bring much needed water to Waukesha, and the Great Water Alliance is committed to completing the work in the most efficient and least disruptive ways possible. Thank you for your patience and cooperation during this construction.



*Using Great Lakes Water the Right Way*

[www.greatwateralliance.com](http://www.greatwateralliance.com)